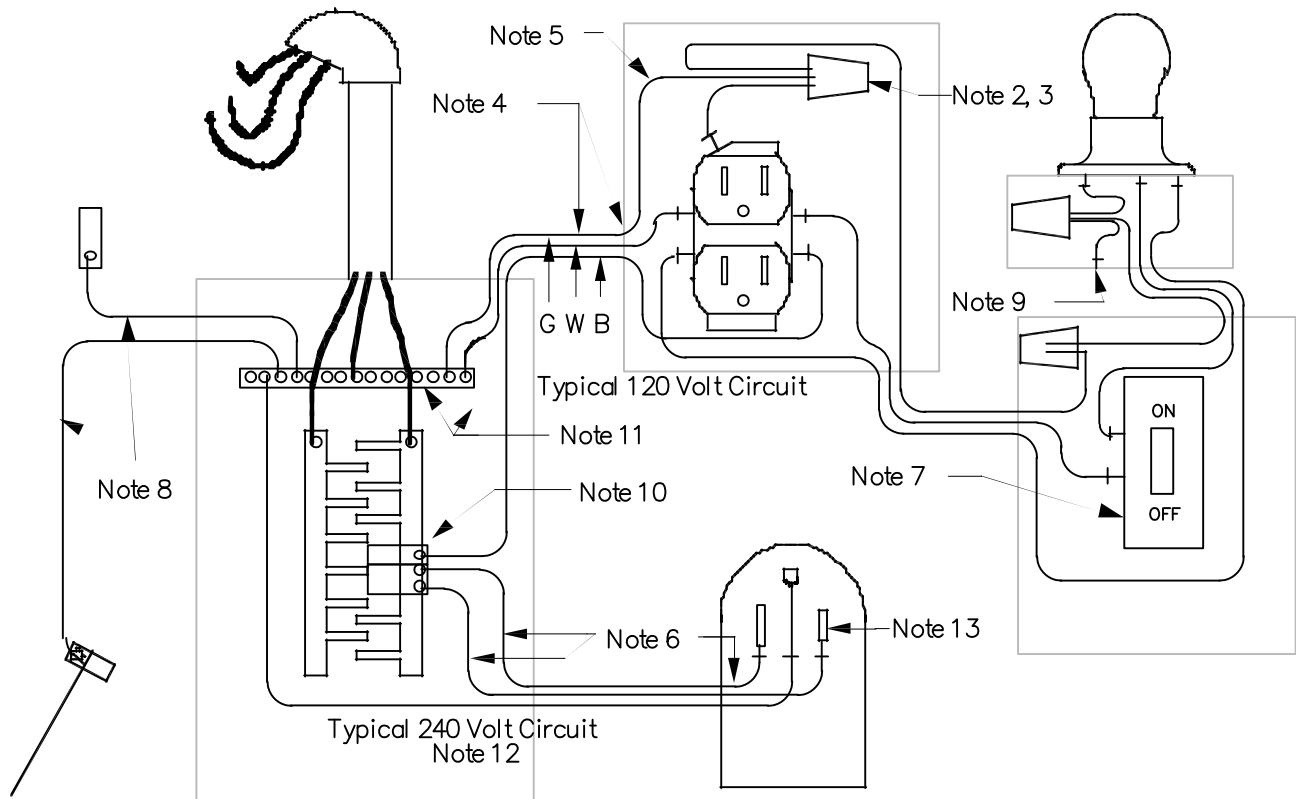


1. This handout is not intended to replace the National Electrical Code<sup>®</sup> (N.E.C.) as adopted. It focuses only on the materials and methods most commonly used in this area for residential wiring. It assumes, for instance, the use of copper non-metallic sheathed cable (romex). It ignores many other alternatives. It is limited to single family residences with services of 200 amps or less, no sub-panels and three stories or less above grade. If more detailed information is needed, the N.E.C. is available in many libraries and may be reviewed at your Building Department.

2. Use UL approved wire nuts to make up connections. Read the box to see how many wires may be fastened with which size nut. Never use solder.



3. Splice wires only in boxes. All boxes must remain accessible.

4. Secure cable as it exits boxes. Small plastic boxes used only in walls without internal clamps are stapled closer to the box. All others have internal clamps or a clamp must be installed. Staple cable within 8" of boxes that do not have any clamping in or on the box. Staple cable within 12" of boxes with clamps. Staple cable at least every 4 1/2 feet.

5. Leave at least 6" of free conductor inside all boxes. Extend the insulation of the cable into boxes 1/4 inch.

6. Use black or red colored conductors to supply power. Use white for neutrals (grounded conductor) except that you may use #6 and larger in a non-white color and marked with white tape at all boxes. Use green or bare for grounding except that you may use #6 and larger in a non-white color and marked with green tape at all boxes. Where a white wire must be used as a power supply, wrap it with black tape at all boxes.



## RESIDENTIAL WIRING

**HELP FOR THE HOMEOWNER  
CAMARILLO BUILDING AND SAFETY**

Building Official:	Date
Date: 01/31/08	Sheet 1 of 1
B816	